

NEW



Function

Your HAKRO textile dealer



ProLux Systemtechnik GmbH & Co. KG  
Am Schindlerwasen 7  
D-89134 Blaustein  
Germany  
Tel.: +49 (0)7304/9695-0  
Fax: +49 (0)7304/9695-40  
E-Mail: info@towing.de  
www.prolux-shop.com

# NO. 136

## HAKRO COTTON TEC® BLOUSE

Functional long-sleeved blouse in fine single jersey look with high-quality processed, fashionable button strip with extra durable sewn-on, break-proof 4-hole buttons – sewn crosswise and double-knotted for extra firm hold – tone on tone with lasered HAKRO lettering and additional spare button. Slightly tailored with darts in the back. Inside of side vents and button strip are reinforced with tone on tone fabric tape. Made using a special knitting process that combines two yarns to create a HAKRO COTTON TEC® double face material. The result is a particularly fine single jersey surface made of long-staple, combed and ring-spun cotton on the outside and a mesh layer made of the functional fiber TRIACTIVE® on the inside. This makes the blouse temperature-regulating, because moisture is quickly transported to the outside, where it can evaporate. Woven HAKRO neck label made of high-quality warp satin with soft, ultrasound-cut band edges for maximum wearing comfort.

**Material** Single jersey made of 50% cotton and 50% polyester **Finish** preshrunk **Property** easy-to-clean, breathable, carbon neutral product **Garment finishing** Screen printing, transfer printing, embroidery

**Country of origin** Laos **Harmonised code** 6206 3000 **Product sheet status:** 02/2023



001  
white



034  
ink

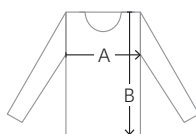


005  
black

 185 g/m<sup>2</sup> | 2XS–3XL | Regular Fit | breathable



Size	2XS	XS	S	M	L	XL	2XL	3XL
A	43.5	45.5	47.5	49.5	52	54.5	57	59.5
B	66.5	67	67.5	68	68.5	69	69.5	70



All measures and sizes are subject to change! Slight deviations of measure may occur due to efficient confection; therefore we recommend a fitting at your authorised HAKRO dealer.  
Measure tolerance for A (=1/2 chest) +/- 1.5 cm and B (=length) +/- 2 cm.

**HAKRO**<sup>®</sup>  
HÄLT. SEIT 1969



TRUE COLORS

